

*Care for A Better Life*

Suzhou Kangyouwei Medical Technology Co., Ltd.

Web: [www.zodelo.com](http://www.zodelo.com)

TEL: +86-18052667944

Post Code: 215000

Email: [info@zodelo.com](mailto:info@zodelo.com)

Address: Building 9, No. 28 Xingzhong Road, Wuzhong  
Economic Development Zone, Suzhou, China



## Zodelo Ostomy Care Products



CONTENTS

P 01 • Company Introduction

R&D Investment	P 03
Company Honors	P 03
Company Culture	P 04

P 05 • Company Introduction

Product analysis	P 05
Customization Process	P 06

P 07 • Product Structure

Sealing Method	P 07
Scale Substrate	P 07
EVOH or PVDC film	P 08
Fabric/back window design	P 08
Exhaust valve	P 09
Carbon filter	P 09
Medical hydrolloid	P 10
Spunlace extender	P 10
Bag Shape	P 11
Two-piece system with flange	P 11
Anti-backflow design	P 12
Logo customization	P 12

P 13 • Zodelo Products

Airlora Series	P 14
Calmlora Series	P 16
Mellora Series	P 24
Joylora Series	P 30
Silicone Gel Series	P 32
Stoma Accessories	P 38

COMPANY INTRODUCTION



Vison:

To become a global leader in ostomy care.  
Empowering every user to live with dignity, confidence, and comfort.

About US:

Suzhou Kangyouwei Medical Technology Co., Ltd.,founded in 2007,is an innovation-driven enterprise in the medical field, dedicated to the research, development, production, and sales of ostomy and related products. The company is committed to building its own brand — Zodelo.

Located in Suzhou, China, the factory covers an area of 20,000 square meters and employs over 200 skilled technicians and more than 40 R&D experts. With an annual production capacity of 65 million units and an output value of 150 million RMB, Kangyouwei has established itself as a leading force in the industry.

From 2021 to 2024, Zodelo’s ostomy pouch series consistently ranked No.1 in sales across major e-commerce platforms in China, reflecting the brand’s superior quality, strong market recognition, and growing consumer trust.

## R&D Investment



Kangyouwei Medical Technology Co., Ltd. regards innovation as the lifeblood of its survival and development, continuously focusing on user needs to drive product development and upgrades.

As of 2025, our company has been granted 50 patents, including 3 invention patents and 46 utility model patents.

Our company has successfully passed the ISO13485 Quality system, and CE.

## Company Honors



Title of Private  
Technology Enterprise



National High-Tech  
Enterprise Certification



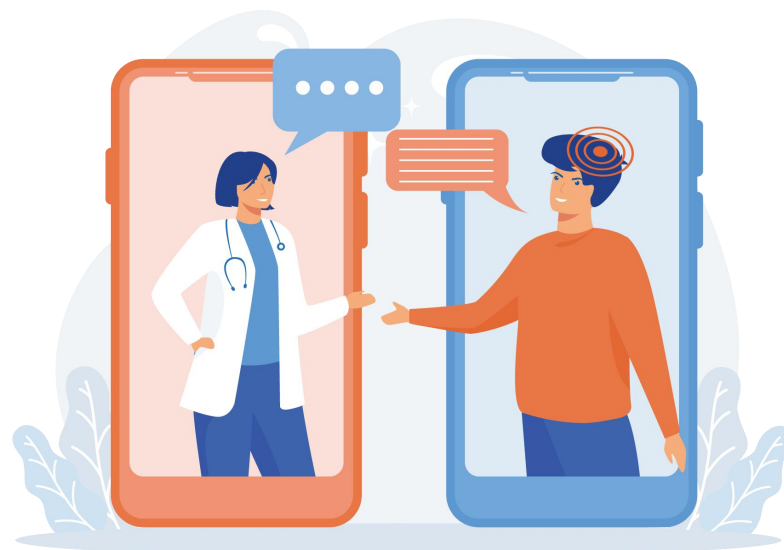
Enterprise Credit  
Management System  
Certification

## Company Culture

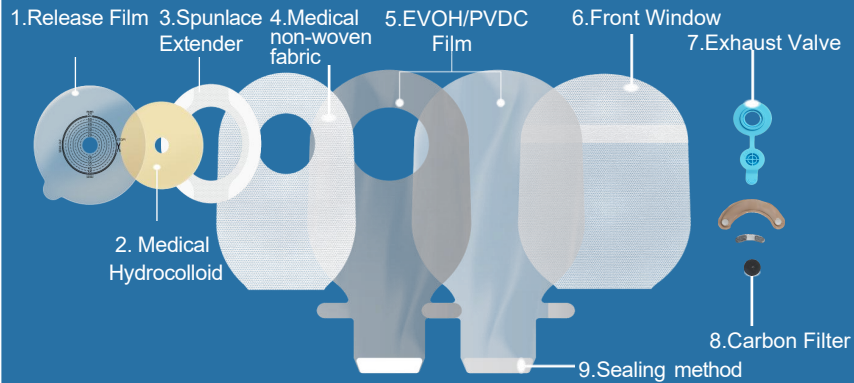
► Our Slogan: Care for a better life

► Our Focus: We focus not only on products, but on every user's real experience.

► Our Quality: We believe quality is not tested — it is built. Every product we make is a tribute to life.



## ONE-PIECE PRODUCT ANALYSIS PROFILE



1. **Release film**(Strong adhesive, easy to peel off)
2. **Medical hydrocolloid**(Good stickiness, long-lasting and skin-friendly, no residue on the skin)
3. **Spunlace extender**(Reinforce the baseplate, prevent warping, not prone to allergies)
4. **Medical non-woven fabric**(Soft, comfortable and ventilate, reduce friction noise, avoid embarrassment)
5. **EVOH film**(7-layer film co-extruded, strong and durable)
6. **Back window**(Double layer medical non-woven fabric, reduce friction sound, more concealed)
7. **Exhaust valve**(Quickly discharge the flatulence in the bag)
8. **Carbon filter**(Good adsorption, effectively filter excrement odor)
9. **Sealing method**(The sealing operation is convenient and the sealing is tight)

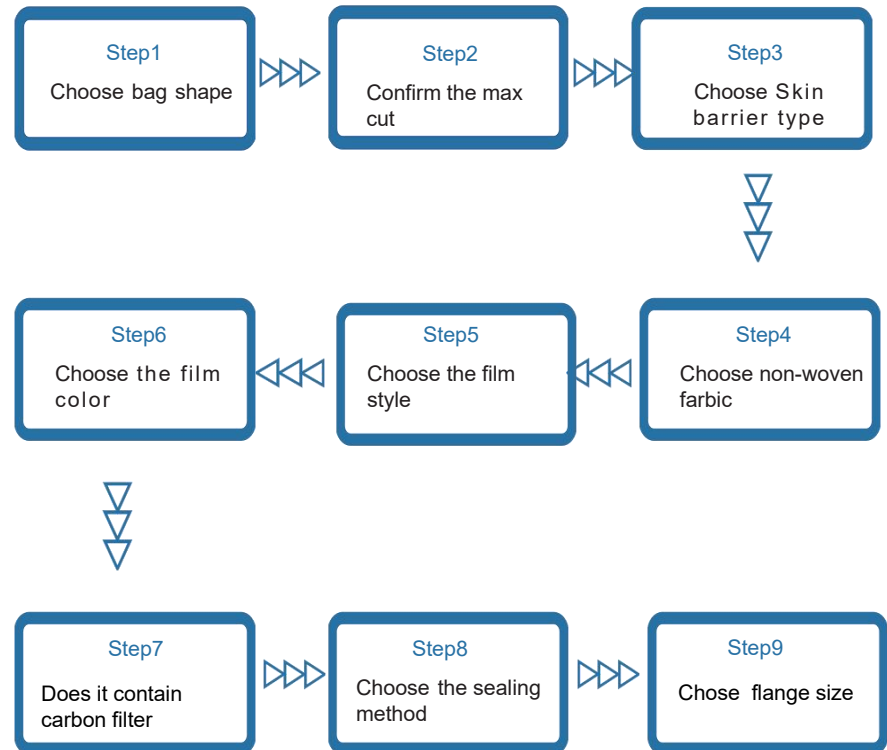


## Ostomy Bag Customization Process

If you want to have a unique ostomy bag, you can customize it as you like.

You can choose step by step according to the following process, and the corresponding structure is introduced later.

Please choose 1~8 for one piece system, please choose 1~9 for two-piece system.



## Structure 1



## Sealing Method

4 types of sealing methods:

3 types for **colostomy bag**, namely---Clamp, Hook and Loop, Velcro and Medical Twist Tie

1 type for **urostomy bag**: Drain Valve.



Clamp



Velcro



Medical Twist Tie



Drain Valve

## Structure 2



## Scale Substrate

2 types of base material for cutting hole printing line:

Release Paper and Release Film, which have the same function, protecting the skin barrier and printing scale marks, and making it convenient for patients to cut.



## Structure 3



## EVOH or PVDC film

The body of the ostomy bag can be made of EVOH film or PVDC film.

EVOH film is lightweight, durable, and offers excellent gas barrier properties.

PVDC film excels in moisture resistance and odor control.



## Structure 4



## Fabric/back window design

3 types of fabrics used for ostomy bags

white non-woven fabric

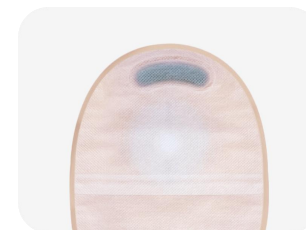
gray non-woven fabric

brown non-woven fabric

3 types of fabric



window design





## Structure 5

**Exhaust valve**

When the bag is full of gas, the gas release valve allows for quick and easy venting with simple operation.



## Structure 6

**Carbon Filter**

Carbon pieces come in three different shapes: small black discs, small arcs, and large crescents. It absorbs odors and can also release gas, though venting is slower and requires punching holes.



## Structure 7

**Medical hydrocolloid**

The skin barrier is made of medical-grade hydrocolloid. It is translucent, sticky, gentle on the skin, comfortable to wear, and can last 5–7 days with proper use.



## Structure 8

**Spunlace extender**

It enhances skin barrier adhesion, prevents warping, and keeps the bag secure—ideal for active patients.

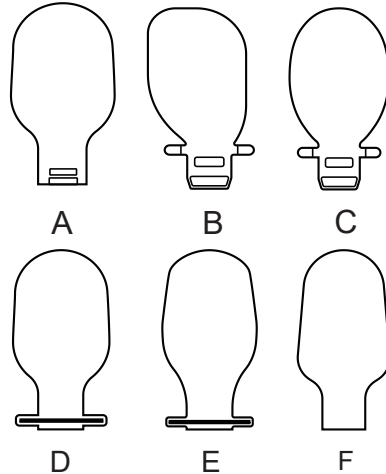


## Structure 9



## Bag Shape

The bag comes in various shapes and supports **customization** to meet different needs.



## Structure 10



## Two-piece system with flange

The flange system is made of translucent polyethylene and used with a buckle. It has 3 belt tabs for easy reinforcement and comes in three sizes: 45, 57, and 70.



## Structure 11



## Anti-backflow design

Used in urostomy bags, it prevents liquid backflow and protects the skin around the stoma.



## Structure 12



## Logo customization

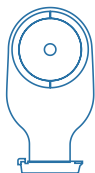
We offer personalized customization options for the Ostomy baseplate, non-woven bag, and product packaging.



## Zodelo Six Major Product Series

### Airlora Series

Entry-Level Model



### Calmlora Series

Basic Model



### Mellora Series

Upgraded Model



### Joylora Series

Premium Model



### All-Silicone Series

Premium Model



### Stoma Accessories



## Airlora Series

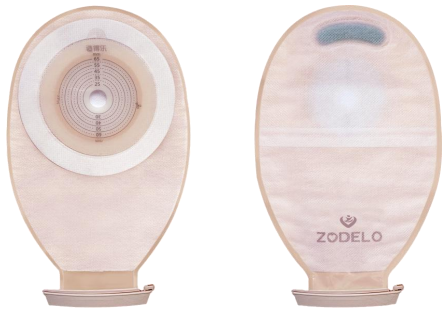
—— Entry-Level Model





# Airlora Series

## ■ One-Piece Colostomy Pouch



1.

Double-layer baseplate  
Strong adhesion
2.

Filter odors  
Prevent ballooning
3.

Double-Sided Fabric  
Comfortable wear
4.

Locks in Odors  
Worry-FreeSocializing
5.

Hydrocolloid Baseplate  
Soft and Gentle
6.

Precise Scale  
Easy to Cut

Model	214047
Max cut	65mm
Skin barrier diameter	130mm
Fabric	Double sides brown non-woven fabric
Barrier material	Medical hydrocolloid and spunlace
Bag color and Capacity	brown,350ML
Closure	Clamp
Other structures	Front window,small arc-shaped carbon piece
Box size	220x170x50mm
Carton size	
Carton specification	10pcs/box

# Calmlora Series

## —— Basic Model



# Calmlora Series

## ■ One-Piece Colostomy Pouch



1. Integrated vent & clean design

2. Reinforced ring twice as secure

3. Double-hook Velcro for enhanced durability
4. Easy-pull outlet design

5. Strong seal locks in odors

6. Double-sided non-woven fabric for greater comfort

Model	214512
Max cut	65mm
Skin barrier diameter	92mm
Fabric	Double sides white non-woven fabric
Barrier material	Medical hydrocolloid and spunlace
Bag color and Capacity	Double sides White,350ML
Closure	Velcro
Other structures	Front window, blue exhaust valve
Box size	220x170x50mm
Carton size	
Carton specification	10pcs/box

# Calmlora Series

## ■ Two-Pieces Colostomy Pouch -Transparent bag



1. Two-Piece Design Easy Use & Cleaning

2. Integrated vent & clean design

3. Soft Buckle for Comfortable Wear
4. Compatible with Two Baseplates for Different Ostomy Needs

5. Easy-pull outlet design

6. Double-hook Velcro for enhanced durability

Model	214532
Flange	60mm
Fabric	Single side white non-woven fabric
Bag color	Single side white
Other structures	Blue exhaust valve
Closure	Velcro
Box size	220x170x50mm
Carton size	
Carton specification	10pcs/box,

# Calmlora Series

## Two-Pieces Colostomy Pouch



1. Two-Piece Design  
Easy Use & Cleaning

2. Integrated vent & clean design

3. Soft Buckle for  
Comfortable Wear
4. Compatible with Two  
Baseplates for Different  
Ostomy Needs

5. Easy-pull outlet design

6. Double-hook Velcro for  
enhanced durability

Model	214542
Flange	60mm
Fabric	Double sides white non-woven fabric
Bag color	Double sides white
Other structures	Front window, blue exhaust valve
Closure	Velcro
Box size	220x170x50mm
Carton size	
Carton specification	10pcs/box,

# Calmlora Series

## One-Piece Urostomy Bag



1. Hypoallergenic High-  
Adhesive Hydrocolloid

2. Anti-Reflux  
Infection Preventio

3. Clear Scale for  
Easy Cutting
4. Upgraded Baseplate for  
Leak Prevention

5. Breathable Non-  
Woven Lining  
Skin-Friendly

6. Soft Plug Seal, Leak-  
Proof Design

Model	113042
Max cut	70mm
Skin barrier diameter	
Fabric	Single side white non-woven fabric
Barrier material	Medical hydrocolloid and spunlace
Bag color	Single side transparent
Closure	Drain valve
Other structures	Anti-backflow design
Box size	220x170x55mm
Carton size	
Carton specification	10pcs/box

# Calmlora Series

## Two-Pieces Urostomy Bag



1. Two-Piece Design  
Easy Use

2. Anti-Reflux  
Infection Preventio

3. Soft Buckle for  
Comfortable Wear
4. Compatible with Two  
Baseplates for Different  
Ostomy Needs

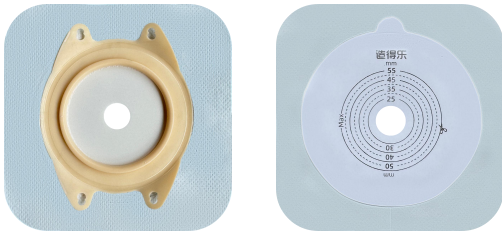
5. Breathable Non-  
Woven Lining  
Skin-Friendly

6. Soft Plug Seal, Leak-  
Proof Design

Model	113412
Flange	60mm
Fabric	Single side white non-woven fabric
Bag color	Single side transparent
Other structures	Anti-backflow design
Closure	Drain valve
Box size	220x170x50mm
Carton size	
Carton specification	10pcs/box

# Calmlora Series

## Two-Pieces Flat Skin Barrier



1. Square spunlace  
reinforcement

2. Precise Scale  
Easy to Cut

3. Double-layer baseplate  
Strong adhesion
4. Single-piece PVC blister  
packaging

5. Enhanced hydrocolloid  
ideal for sweaty skin

6. Hydrocolloid Baseplate  
Soft and Gentle

Model	3044
Max cut	60mm
Skin barrier size	100mm
Flange	60mm
Barrier material	Medical hydrocolloid and spunlace
Printing line base material	Release paper
Box size	170x160x40mm
Carton size	
Carton specification	5pcs/box,

# Calmlora Series

## ■ Two-Piece Convex Skin Barrier



1.

Outer spunlace adhesive sweat-resistant,breathable for a stronger hold
2.

Precise Scale Easy to Cut
3.

Double-layer baseplate Strong adhesion
4.

Single-piece PVC blister packaging
5.

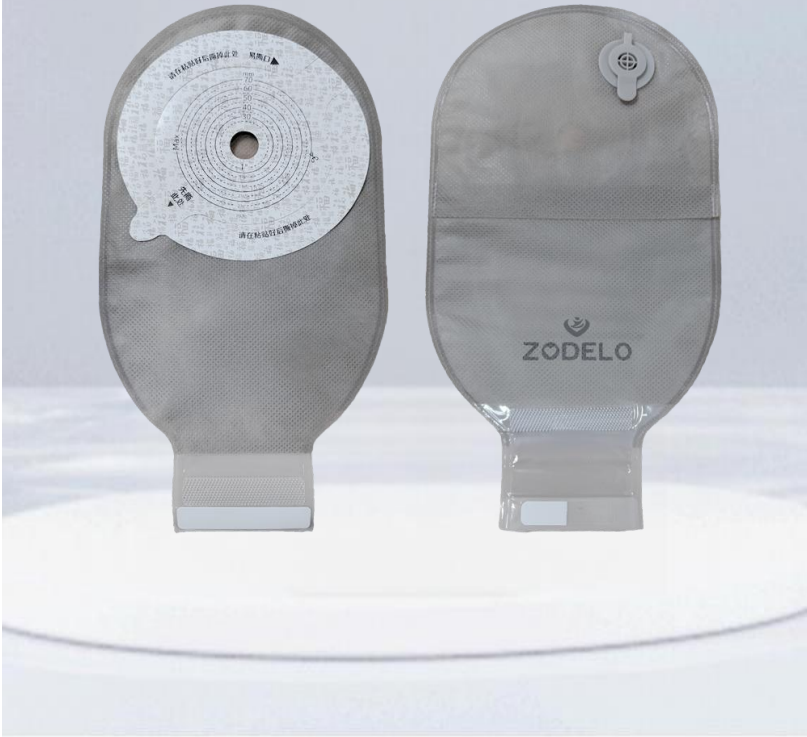
Enhanced hydrocolloid ideal for sweaty skin
6.

Hydrocolloid Baseplate Soft and Gentle

Model	3023
Max cut	45mm
Skin barrier size	118mm
Flange	60mm
Barrier material	Medical hydrocolloid
Printing line base material	Release film
Box size	170x160x70mm
Carton size	
Carton specification	5pcs/box,

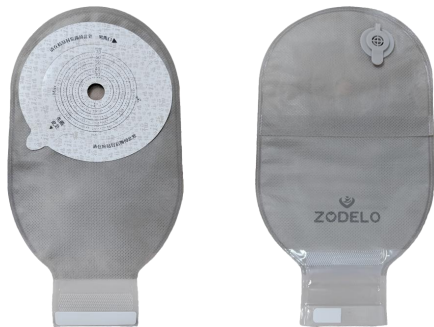
# Mellora Series

—— Upgraded Model



# Mellora Series

## ■ One-Piece Colostomy Pouch



1. Softer baseplate for better fit and no edge lifting

2. Upgraded Adhesion Longer Lasting Use

3. Oval Adhesive Baseplate Strong Absorbency & Durability
4. Chinese-style design elegant and comfortable

5. Upgraded Gray Film for Enhanced Odor Barrier

6. Integrated Venting & Cleaning Design Convenient and Practical

Model	214513
Max cut	70mm
Skin barrier diameter	122mm
Fabric	Double sides grey non-woven fabric
Barrier material	Medical hydrocolloid
Bag color	Grey
Closure	Velcro
Other structures	Front window, Grey Exhaust Valve
Box size	220x170x50mm
Carton size	
Carton specification	10pcs/box,

# Mellora Series

## ■ Two-Pieces Colostomy Pouch -Transparent bag



1. Two-Piece Design Easy Use & Cleaning

2. Integrated vent & clean design

3. Reinforced Edging Long-Lasting Adhesion
4. Compatible with Two Baseplates for Different Ostomy Needs

5. Secure Lock Easy On/Off

6. High-Barrier PVDC for Superior Odor Isolation

Model	214563
Flange	60mm
Fabric	Single side brown non-woven fabric
Bag color	Brown and transparent
Other structures	Brown Exhaust Valve
Closure	Velcro
Box size	220x170x50mm
Carton size	
Carton specification	10



# Mellora Series

## Two-Pieces Drainable Colostomy Pouch



1.

Two-Piece Design  
Easy Use & Cleaning
2.

Integrated vent &  
clean design
3.

Reinforced Edging  
Long-Lasting Adhesion
4.

Compatible with Two  
Baseplates for Different  
Ostomy Needs
5.

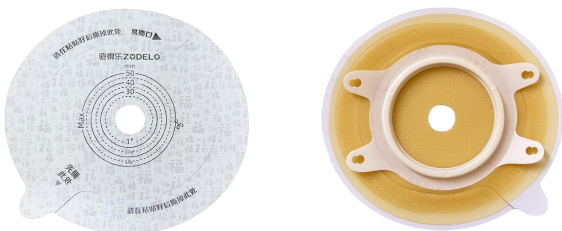
Secure Lock  
Easy On/Off
6.

High-Barrier PVDC for  
Superior Odor Isolation

Model	214564
Flange	60mm
Fabric	Double sides brown non-woven fabric
Bag color	Double sides brown
Other structures	Brown Exhaust Valve
Closure	Velcro
Box size	220x170x50mm
Carton size	
Carton specification	10

# Mellora Series

## Two-Pieces Flat Skin Barrier



1.

Upgraded Self-  
Development Adhesive
2.

Precise Scale  
Easy to Cut
3.

Double-layer baseplate  
Strong adhesion
4.

Single-piece PVC blister  
packaging
5.

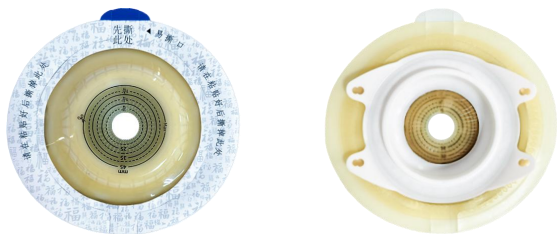
Sweat-Resistant:With  
Sweat -Proof Function
6.

Hydrocolloid Baseplate  
Soft and Gentle

Model	60132
Max cut	50mm
Skin barrier size	125x115mm
Flange	60mm
Can be manufactured	55,60,65mm
Barrier material	Medical hydrocolloid
Printing line base material	Release paper
Box size	193x163x43mm
Carton size	
Carton specification	5pcs/box,

# Mellora Series

## ■ Two-Pieces Convex Skin Barrier



1.

Upgraded Self-Development Adhesive
2.

Precise Scale Easy to Cut
3.

Double-layer baseplate Strong adhesion
4.

single-piece PVC blister packaging
5.

Sweat-Resistant:With Sweat -Proof Function
6.

Hydrocolloid Baseplate Soft and Gentle

Model	11035
Max cut	45mm
Skin barrier size	mm
Flange	43
Can be manufactured	
Barrier material	Medical hydrocolloid
Printing line base material	Release paper
Box size	193x163x43mm
Carton size	
Carton specification	5pcs/box,



# Joylora Series

## Two-Pieces Drainable Colostomy Pouch



1. Softer baseplate for better fit and no edge lifting

2. Upgraded Adhesion, Longer Lasting Use

3. Oval Adhesive Baseplate Strong Absorbency & Durability
4. Chinese-style design elegant and comfortable

5. Upgraded Gray Film for Enhanced Odor Barrier

6. Integrated Venting & Cleaning Design Convenient and Practical

Model	214064
Max cut	70mm
Skin barrier diameter	133x122mm
Fabric	Double sides grey non-woven fabric
Barrier material	Medical hydrocolloid
Bag color	Grey
Closure	Velcro
Other structures	Front window,large crescent-shaped carbon piece
Box size	220x170x50mm
Carton size	
Carton specification	10pcs/box,



# Silicone Gel Series

## ■ One-Piece Colostomy Pouch



1. Softer baseplate for better fit and no edge lifting

2. Upgraded Adhesion, Longer Lasting Use

3. Oval Adhesive Baseplate Strong Absorbency & Durability
4. Chinese-style design elegant and comfortable

5. Upgraded Gray Film for Enhanced Odor Barrier

6. Integrated Venting & Cleaning Design Convenient and Practical

Model	321003
Flange	60
Fabric	Double Sides Brown non-woven fabric
Bag color	Brown
Other structures	Front window,large crescent-shaped carbon piece
Closure	Velcro
Box size	220x170x50mm
Carton size	
Carton specification	10

# Silicone Gel Series

## ■ Two-Pieces Colostomy Pouch

-Transparent bag



1. Two-Piece Design Easy Use & Cleaning

2. Integrated vent & clean design

3. Soft Buckle for Comfortable Wear
4. Compatible with Two Baseplates for Different Ostomy Needs

5. Easy-pull outlet design

6. Double-hook Velcro for enhanced durability

Model	214532
Flange	60mm
Fabric	Single side white non-woven fabric
Bag color	Single side white
Other structures	Blue exhaust valve
Closure	Velcro
Box size	220x170x50mm
Carton size	
Carton specification	10pcs/box,

# Silicone Gel Series

## Two-Pieces Colostomy Pouch



1. Two-Piece Design  
Easy Use & Cleaning

2. Integrated vent &  
clean design

3. Soft Buckle for  
Comfortable Wear
4. Compatible with Two  
Baseplates for Different  
Ostomy Needs

5. Easy-pull outlet design

6. Double-hook Velcro for  
enhanced durability

Model	214542
Flange	60mm
Fabric	Double sides white non-woven fabric
Bag color	Double sides white
Other structures	Front window, blue exhaust valve
Closure	Velcro
Box size	220x170x50mm
Carton size	
Carton specification	10pcs/box,

# Silicone Gel Series

## Two-Pieces Urostomy Bag



1. Two-Piece Design  
Easy Use

2. Anti-Reflux  
Infection Preventio

3. Soft Buckle for  
Comfortable Wear
4. Compatible with Two  
Baseplates for Different  
Ostomy Needs

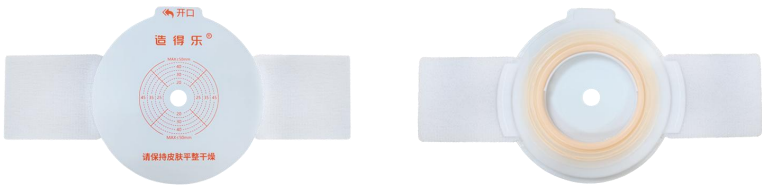
5. Breathable Non-  
Woven Lining  
Skin-Friendly

6. Soft Plug Seal, Leak-  
Proof Design

Model	113042
Max cut	70mm
Skin barrier diameter	
Fabric	Single side white non-woven fabric
Barrier material	Medical hydrocolloid and spunlace
Bag color	Single side transparent
Closure	Drain valve
Other structures	Anti-backflow design
Box size	220x170x50mm
Carton size	
Carton specification	10pcs/box

# Silicone Gel Series

## ■ Two-Pieces Flat Skin Barrier



1. Upgraded Self-Development Adhesive
2. Precise Scale Easy to Cut
3. Double-layer baseplate Strong adhesion
4. single-piece PVC blister packaging
5. Sweat-Resistant:With Sweat -Proof Function
6. Hydrocolloid Baseplate Soft and Gentle

Model	60012
Max cut	45mm
Skin barrier size	mm
Flange	43
Can be manufactured	
Barrier material	Medical hydrocolloid
Printing line base material	Release paper
Box size	193x163x43mm
Carton size	mm
Carton specification	5pcs/box,

# Stoma Accessories





# Stoma Accessories



1. Stoma skin care powder

30g



2. Stoma skin protectant

30ml

60ml

100ml



3. Stoma skin protective film  
(sheet wipe)

30pcs/box



4. Stoma anti-leak paste

30ml

60ml

100ml



5. Stoma anti-leak ring

2mm

4mm

10pcs/box



6. Medical adhesive remover

30ml

60ml

100ml

# Stoma Accessories



7. Reinforcing adhesive patch

spunlace fabric

hydrocolloid



8. Adhesive remover  
(sheet wipe)

20pcs/box



9. Abdominal elastic bandage

regular

summer lightweight



10. Stoma belt



11. Stoma curved scissors



12. 500ml washing bottle